



上海伯豪生物技术有限公司  
SHANGHAI BIOTECHNOLOGY CORPORATION

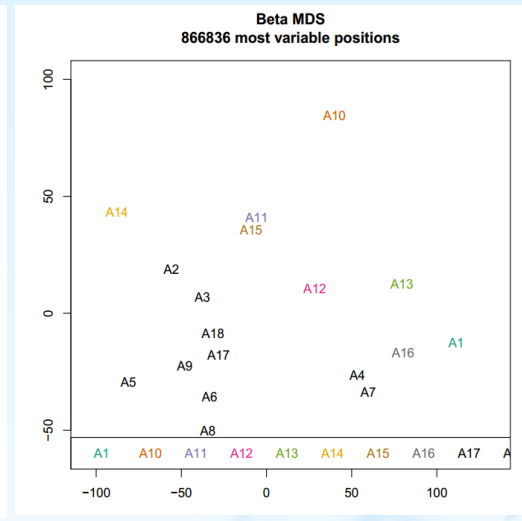
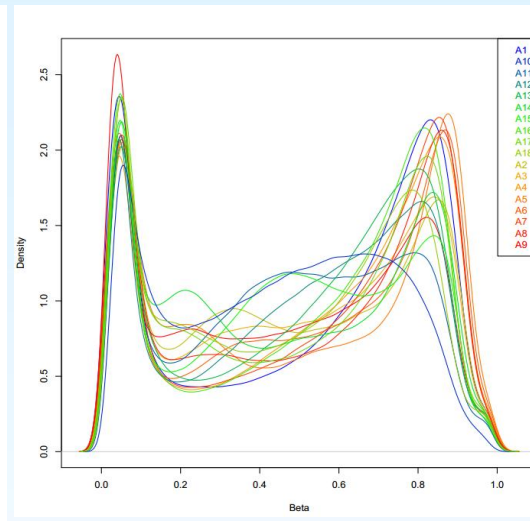
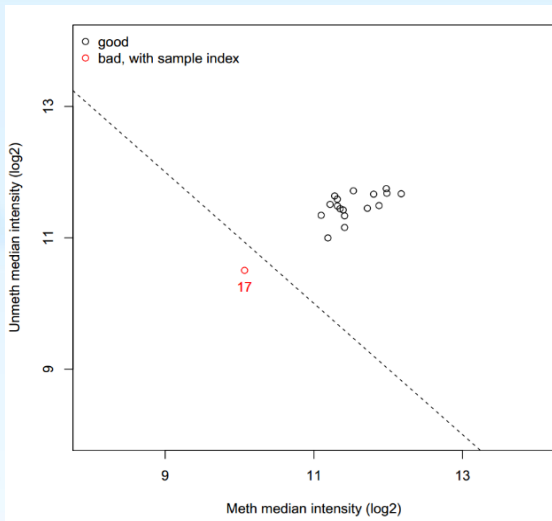
# FFPE\_850K项目经验

# BH160743\_已修复



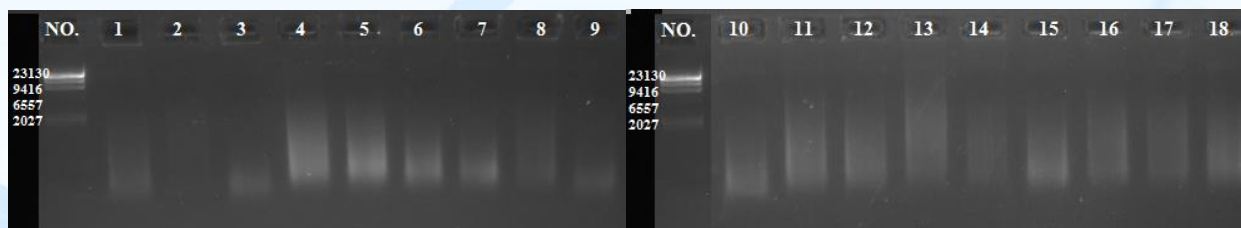
FFPE样本	faile_ratio	call_ratio	conc(ng/ul)	A260/ A280	A260/ A230	ΔCt	QC ΔCt<5
A1	0.003068441	0.996931559	22.6	/	/	1.1	Pass
A2	0.00451608	0.99548392	26.6	/	/	0.8	Pass
A3	0.008573856	0.991426144	9.14	/	/	1.8	Pass
A4	0.001656589	0.998343411	/	/	/		?
A5	0.002558188	0.997441812	17.3	/	/	1.2	Pass
A6	0.001580397	0.998419603	16.9	/	/	0.9	Pass
A7	0.002678248	0.997321752	12.8	/	/	1.4	Pass
A8	0.002290364	0.997709636	26.8	/	/	0.9	Pass
A9	0.001982134	0.998017866	43	/	/	0.9	Pass
A10	0.045691831	0.954308169	/	/	/		?
A11	0.017560994	0.982439006	2.04	/	/	-0.1	Pass
A12	0.006976143	0.993023857	19.2	/	/	-0.6	Pass
A13	0.006020285	0.993979715	5.56	/	/	0.2	Pass
A14	0.005317245	0.994682755	31	/	/	-1.0	Pass
A15	0.003539443	0.996460557	21	/	/	-0.8	Pass
A16	0.003399758	0.996600242	/	/	/		?
A17	0.006365456	0.993634544	11.2	/	/	0.8	Pass
A18	0.012104064	0.987895936	22.8	/	/	0.2	Pass

# BH160743\_已修复

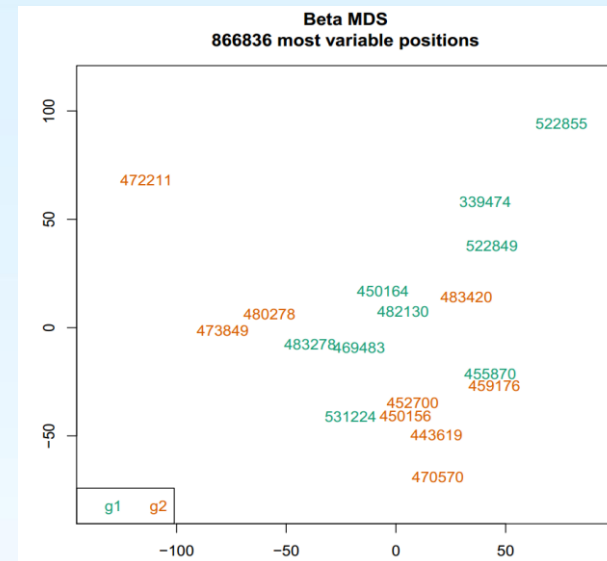
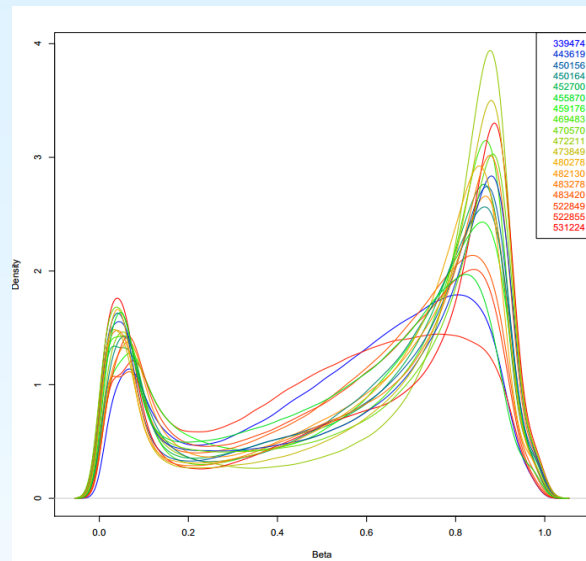
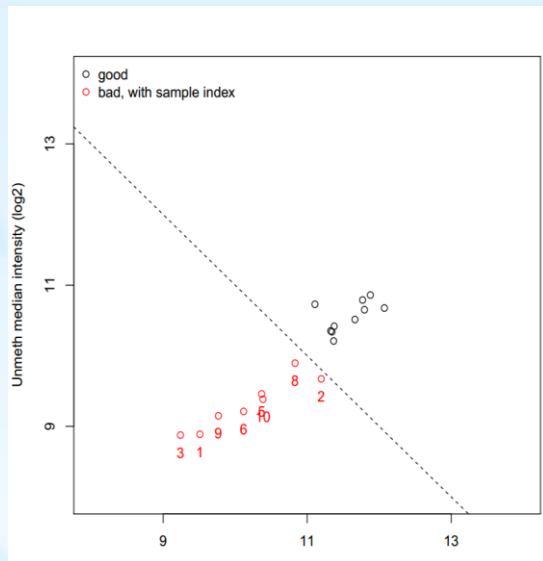


# BH170403\_已修复

FFPE样本	fail_ratio	call_ratio	序号	conc(ng/ul)	A260/ A280	A260/ A230	△Ct	QC △Ct<5
339474	0.0401078	0.959892205	1	63.2	1.91	0.81	3.6	Pass
443619	0.0037225	0.996277527	15	108	1.9	1.66	2.2	Pass
450156	0.0026464	0.997353627	11	148.4	1.88	1.66	1.9	Pass
450164	0.0091411	0.990858928	10	64	1.91	1.05	3.3	Pass
452700	0.0071401	0.992859873	4	321.1	1.92	1.93	2.4	Pass
455870	0.0083513	0.991648684	12	105	1.88	1.36	2.4	Pass
459176	0.0154787	0.984521257	5	449.3	1.9	2.08	2.9	Pass
469483	0.0043079	0.995692139	7	206.7	1.95	1.81	2.6	Pass
470570	0.0018855	0.998114517	16	86.1	1.93	1.2	2.1	Pass
472211	0.0097565	0.990243519	2	41.7	2.29	0.2	4.3	Pass
473849	0.0019848	0.99801522	17	63.8	1.95	0.8	1.7	Pass
480278	0.0013336	0.998666422	18	128.9	1.92	1.48	2.8	Pass
482130	0.0066471	0.993352892	8	45.5	1.93	0.75	3.7	Pass
483278	0.0026267	0.997373255	14	49.5	1.95	0.67	2.8	Pass
483420	0.0180836	0.98191645	6	200.1	1.88	1.82	3.2	Pass
522849	0.0163562	0.983643751	9	43.2	1.95	0.67	5.4	Fail
522855	0.0578184	0.942181595	3	33.6	2.15	0.25	5.2	Fail
531224	0.0019363	0.998063714	13	103.5	1.92	1.3	2.2	Pass

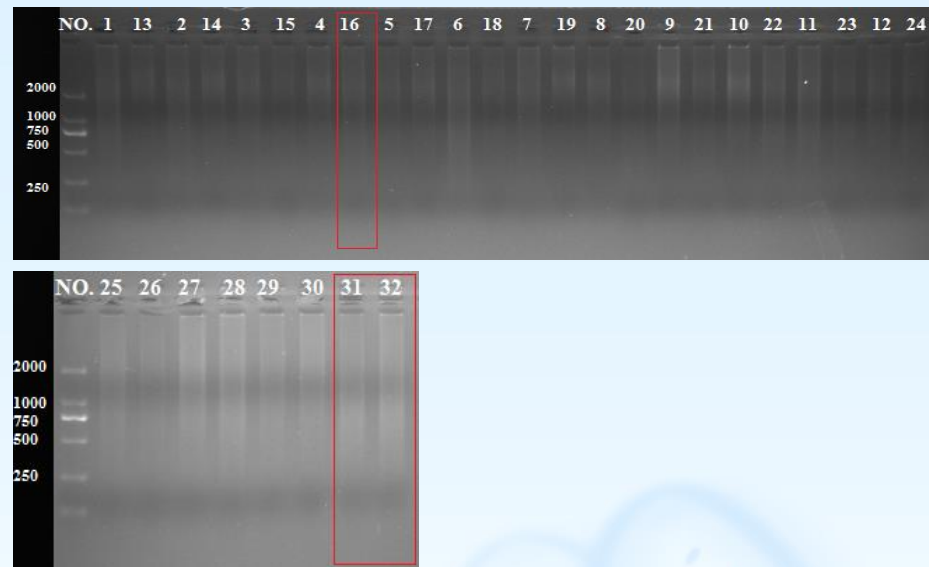


# BH170403\_已修复



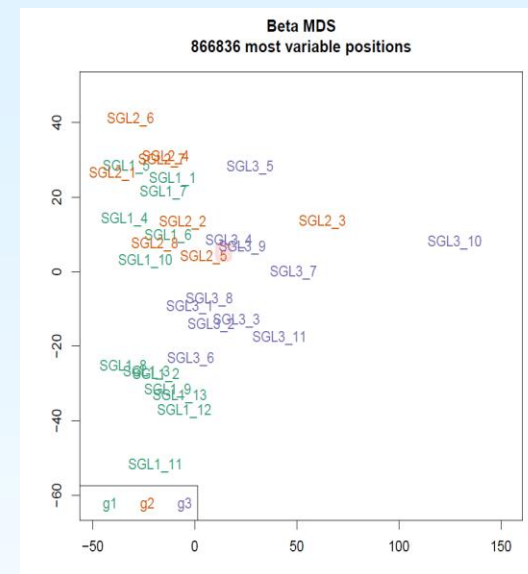
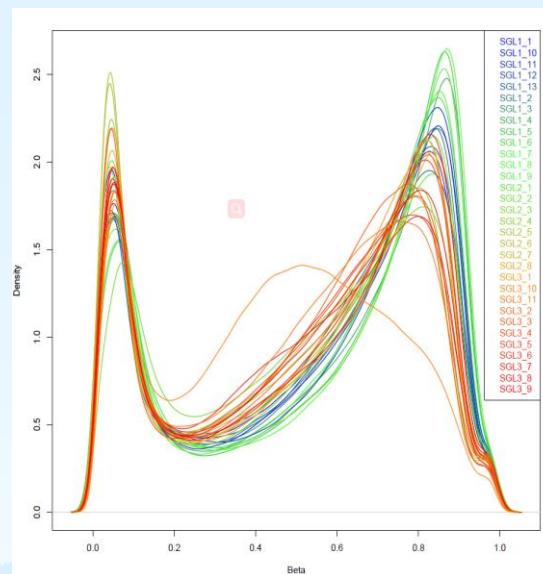
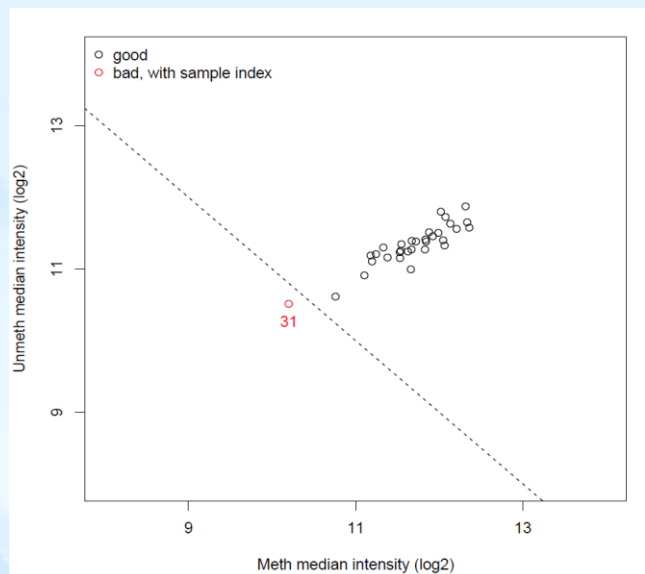
# BH170419\_未修复

FFPE样本	Fail ratio	call ratio	序号	conc(ng/ul)	A260/ A280	A260/ A230
SGL1_1	0.76%	0.992432796	1	203	1.96	0.96
SGL1_2	0.28%	0.997184377	2	331.3	1.98	1.25
SGL1_3	0.21%	0.997895498	3	81.1	2	0.52
SGL1_4	0.15%	0.998509647	4	71.2	2.05	0.45
SGL1_5	0.24%	0.997596504	5	41.5	2.17	0.29
SGL1_6	0.58%	0.994185201	6	233	1.97	1.03
SGL1_7	0.49%	0.995119124	7	162.6	1.98	0.82
SGL1_8	0.15%	0.998453081	8	83	2.03	0.5
SGL1_9	0.20%	0.997961299	9	196.8	1.97	0.98
SGL1_10	0.21%	0.997850475	10	204.5	1.97	0.96
SGL1_11	0.50%	0.994999065	11	320.5	1.96	1.21
SGL1_12	0.56%	0.994428783	12	81.5	2.04	0.5
SGL1_13	0.22%	0.997783519	13	67.7	2.1	0.44
SGL2_1	0.22%	0.997775438	14	117.9	2.04	0.67
SGL2_2	0.75%	0.992535539	15	47.1	2.17	0.34
SGL2_3	6.05%	0.939516622	16	95.8	2.01	0.63
SGL2_4	0.30%	0.996967346	17	74.2	2.04	0.46
SGL2_5	0.47%	0.995276125	18	28.6	2.22	0.23
SGL2_6	0.14%	0.998602001	19	99.7	2.04	0.6
SGL2_7	0.27%	0.997310208	20	42	2.23	0.31
SGL2_8	0.17%	0.998300698	21	98.6	2.03	0.65
SGL3_1	0.55%	0.994539607	22	172.1	1.96	0.89
SGL3_2	0.33%	0.996667198	23	82.6	2.04	0.52
SGL3_3	0.83%	0.991732064	24	162	1.97	0.85
SGL3_4	0.45%	0.995466604	25	149.9	1.97	0.8
SGL3_5	1.77%	0.982285469	26	39.1	2.17	0.27
SGL3_6	0.33%	0.996736463	27	214.1	1.97	0.94
SGL3_7	1.10%	0.98898686	28	448.3	1.93	1.39
SGL3_8	0.40%	0.996010334	29	514.2	1.94	1.47
SGL3_9	0.87%	0.991258753	30	133.2	1.98	0.71
SGL3_10	8.69%	0.913094323	31	83	1.96	0.51
SGL3_11	2.76%	0.972356327	32	253.5	1.95	1.08



客户自检，无RT-PCR结果

# BH170419\_未修复



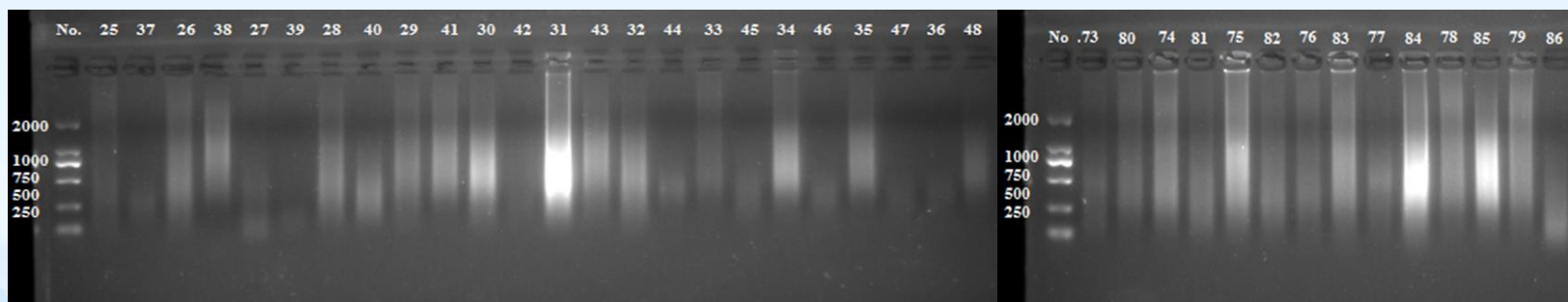
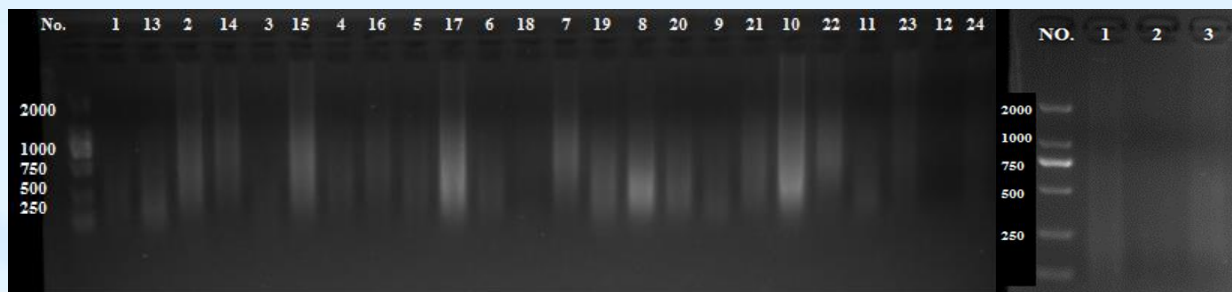
客户自检，无rt-PCR

# BH180259\_已修复

FFPE样本	fail ratio	call ratio	序号	Total	A260/ A280	A260/ A230	Result	△Ct	QC △Ct<5	FFPE样本	fail ratio	call ratio	序号	Total	A260/ A280	A260/ A230	Result	△Ct	QC △Ct<5
283352	0.0056	0.9944	34	12.95	1.87	2.15	A1	2.5	Pass	432378	0.0055	0.9945	69	16.7	1.85	2.12	A1	3.5	Pass
286472	0.0032	0.9968	85	12.83	1.88	1.99	A1	1.9	Pass	435936	0.0026	0.9974	68	19.37	1.9	2.11	A1	2.4	Pass
298285	0.0080	0.9920	84	23.57	1.89	2.09	A1	2.9	Pass	436233	0.0012	0.9988	16	6.12	1.91	2.25	A1	3.8	Pass
303485	0.0051	0.9949	83	23.07	1.89	2.12	A1	3.2	Pass	437347	0.0040	0.9960	67	20.78	1.86	2.15	A1	2.2	Pass
313009	0.0144	0.9856	33	4.71	1.84	2.12	A1	4.5	Pass	442157	0.0064	0.9936	66	15.96	1.85	2.1	A1	2.6	Pass
314519	0.0072	0.9928	32	14.01	1.86	2.04	A1	4.2	Pass	444563	0.0053	0.9947	65	16.14	1.87	2.11	A1	3.0	Pass
321503	0.0408	0.9592	82	4.98	1.81	1.89	A1	5.8	Fail	453291	0.0018	0.9982	15	14.5	1.89	2.23	A1	3.4	Pass
326354	0.0728	0.9272	81	4.94	1.83	1.72	A1	5.3	Fail	453650	0.0018	0.9982	14	3.47	1.92	1.83	A1	2.4	Pass
329300	0.1246	0.8754	80	3.91	1.85	1.94	A1	4.7	Pass	463991	0.0015	0.9985	63	6.79	1.94	1.87	A1	3.8	Pass
337506	0.0024	0.9976	31	49.95	1.85	2.25	A1	2.2	Pass	470455	0.0019	0.9981	60	13.62	1.9	1.98	A1	2.9	Pass
337988	0.0053	0.9947	30	18.95	1.84	2.11	A1	4.5	Pass	473425	0.0090	0.9910	59	8.96	1.88	1.91	A1	3.3	Pass
344257	0.0072	0.9928	79	17.01	1.83	2.15	A1	4.3	Pass	473646	0.0008	0.9992	58	4.69	1.94	1.78	A1	2.6	Pass
344877	0.0060	0.9940	78	10.17	1.86	2.14	A1	3.9	Pass	473795	0.0016	0.9984	10	42.4	1.91	2.29	A1	2.6	Pass
345948	0.0135	0.9865	29	8.97	1.85	1.92	A1	4.4	Pass	477495	0.0208	0.9792	9	0.86	1.82	2.22	A2	4.4	Pass
352973	0.0020	0.9980	75	84.21	1.87	2.12	A1	2.3	Pass	477944	0.0022	0.9978	8	13.63	1.9	2.2	A1	3.3	Pass
366478	0.0186	0.9814	28	10.24	1.85	2.13	A1	4.1	Pass	478126	0.0082	0.9918	1	0.49	2.03	0.52	B	3.2	Pass
379217	0.0407	0.9593	74	9.82	1.85	2.01	A1	4.3	Pass	478958	0.0018	0.9982	7	9.55	1.9	2.17	A1	3.6	Pass
382837	0.0073	0.9927	26	11.79	1.87	2.2	A1	3.8	Pass	479837	0.0021	0.9979	55	25	1.88	2.19	A1	3.5	Pass
394891	0.0028	0.9972	72	28.2	1.9	2.25	A1	3.5	Pass	487653	0.0056	0.9944	52	6.68	1.9	1.64	A1	1.8	Pass
397816	0.0106	0.9894	22	10.57	1.82	2.12	A1	4.7	Pass	491631	0.0021	0.9979	86	2.27	1.94	1.58	A1	1.3	Pass
399350	0.0054	0.9946	21	7.24	1.87	2.18	A1	3.4	Pass	509543	0.0009	0.9991	50	7.78	1.93	1.7	A1	1.4	Pass
402024	0.0452	0.9548	19	4.7	1.83	1.86	A1	3.4	Pass	550982	0.0015	0.9985	43	7.76	1.91	1.77	A1	3.3	Pass
402669	0.0202	0.9798	71	29.86	1.84	2.13	A1	4.3	Pass	574198	0.0042	0.9958	41	8.56	1.87	2.01	A1	3.9	Pass
412160	0.0022	0.9978	17	18.33	1.88	2.12	A1	2.3	Pass	576255	0.0092	0.9908	40	1.5	1.91	1.69	A1	3.2	Pass
										589033	0.0017	0.9983	35	9	1.92	2.25	A1	2.6	Pass



# BH180259\_已修复



# BH180259\_已修复

